



# TEXASGULF

FEDERAL CREDIT UNION



## NEWS & UPDATES

2nd Quarter 2024

### Youth Fair Exhibitors



GET **2.50% ABOVE** REGULAR CD RATES ON YOUR FAIR SALE DEPOSIT.



*Must be active fair participant and must be deposited in the student's account. Deposit must be from county fair check or proof of funds coming from sale proceeds of fair project. Regular rates and terms are based on current rates and terms when the funds are deposited and are subject to change anytime. Renewals will be at the current rates at the time of renewal.*

FIRST AND SECOND LIEN

## Home Equity Loans

LOW RATES + GREAT TERMS



HOME REMODEL

DREAM VACATION

DEBT CONSOLIDATION

EDUCATION COST

## CALLING ALL Graduating Seniors!

Texasgulf gives away

10

\$1000 SCHOLARSHIPS EACH YEAR.

Deadline is April 19th.

Apply today or learn more at [www.texasgulffcu.org](http://www.texasgulffcu.org).





**Locations**

**Wharton**  
2101 N. Fulton St.  
Wharton, TX 77488

**El Campo**  
1313 West Loop  
El Campo, TX 77437

Contact us at:  
**979-282-2300**

**Office Hours**

**Lobby**  
Monday - Friday  
8:30 a.m. - 4:30 p.m.

**Drive Thru**  
Monday - Friday  
7:30 a.m. - 5:30 p.m.

**Holiday Closings**

**Memorial Day**  
Monday, May 27<sup>th</sup>

**Independence Day**  
Thursday, July 4<sup>th</sup>

**Board of Directors**

**Chairperson**  
Weldon Ferrell

**Vice Chairperson**  
David Voulgaris


**Secretary & Treasurer**  
Joan Anandel

Russel Bergstrom  
Philip Hundl  
Tim Duyka  
Randy Rodriguez

[www.texasgulffcu.org](http://www.texasgulffcu.org)

**Tel-Account 24/7**  
1-888-409-8428

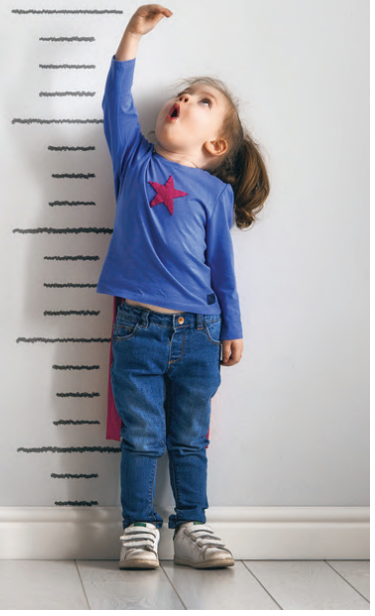
**Shared Branch  
Live Help**  
1-888-837-6500

 **Like us on Facebook:**  
Texasgulf Federal  
Credit Union



**COMING UP  
A LITTLE SHORT?**

**ASK ABOUT ADDING  
COURTESY PAY TO YOUR DEBIT CARD!**



**Do You Have an Inactive Account?**

If you have not used your account in the past 3 years and want to keep it open.

**PLEASE CALL US AT  
800-647-8428**

or email us at [info@texasgulffcu.org](mailto:info@texasgulffcu.org) in order to keep your account active. All unclaimed accounts will be closed and funds sent to the State of Texas.



Don't have a debit card?  
Apply Today!  
 SHAZAM