

MONEY DOG ADVENTURES



**MIDWEST
MEMBERS**
Credit Union

Lucy Haskell Playhouse

Lucy Haskell lived on Henry Street in Alton in the 1800s. Her parents made her a playhouse that looked exactly like their big house. How cool is that?!

Now the area that was once her back yard is the site of Haskell Park. It's a fun place to play on the playground, and in the winter it's a really great spot for sledding! In the summer, there are lovely concerts to listen to and watch.

Have you been to Haskell Park or Lucy's playhouse?



Money Dog was so excited to visit the Lucy Haskell playhouse, he decided to sit and enjoy it a while.



Grafton is Fun!

Money Dog took in the sites at Pere Marquette Park in Grafton, then played for a while at the park at Clifton Terrace. Playing really makes us thirsty, doesn't it?!

The turtle and fish playground at the riverfront is so cool. Do you think turtles can really grow that big? Do you think it's possible that a fish can grow bigger than you?

There's so much to see and do in Grafton. Have you been there? What is your favorite thing to do?



Old Chain of Rocks Bridge

The Old Chain of Rocks Bridge was part of Route 66, which was a highway built in 1926. It went all the way from Chicago, Illinois to Los Angeles, California. It was a popular place for road trips and vacations.

This bridge goes over the river at a very rough spot. You can see the rapids behind Money Dog. Boats could not safely travel this spot, so they built the Chain of Rocks Canal nearby.

This is a pretty spot! Cars can't travel on it anymore, and you can walk or ride your bike all the way across it!



Money Dog at the entrance to the Old Chain of Rocks Bridge in Granite City. It's such a pretty walk across the bridge.



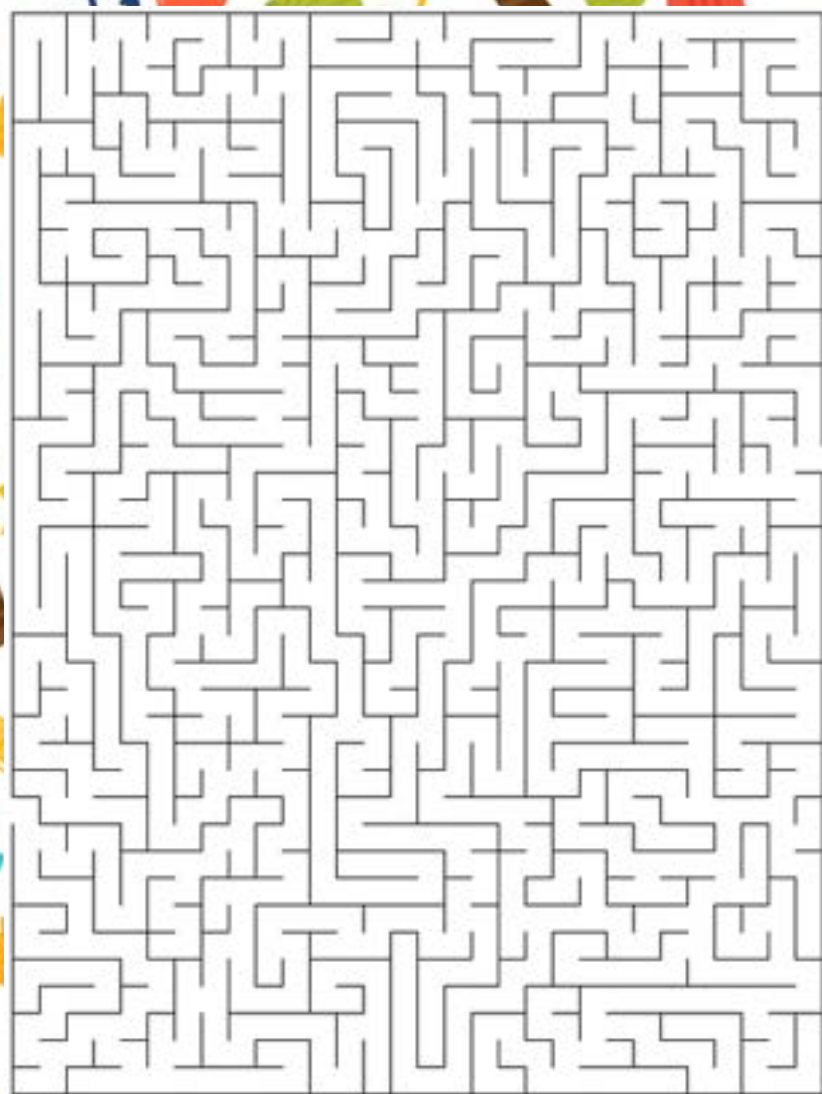
Lewis and Clark Site

Meriwether Lewis and William Clark were explorers who traveled the Mississippi River. They wrote journals about what they found along the way.

The Lewis and Clark State Historic Site in Hartford displays items like those they would have used at the time. A life-sized boat, barrels of supplies, log fireplaces, logs cabins, and much more can be seen and learned about here.

This would be a fun spot to visit with your family this summer!





Start

End

S
U
M
M
E
R

F
U
N

W
O
R
D

S
E
A
R
C
H

G	M	S	S	N	D	P	D	J	H	S	B	T	A	Y	T	A	L	Z	K
A	V	W	E	W	Q	O	X	P	K	D	U	Y	W	Q	T	I	Q	X	I
L	I	Q	C	E	A	O	N	F	I	T	M	N	Y	R	H	D	O	O	K
M	P	F	M	P	L	L	V	N	W	N	B	V	I	B	A	L	S	N	Z
G	C	V	M	O	M	T	W	R	P	N	L	N	U	F	R	W	T	B	Z
R	H	Q	Q	T	R	O	B	J	Q	L	E	N	J	L	W	Z	G	D	G
L	B	G	J	Q	L	Y	L	C	Q	V	B	H	H	E	V	A	E	B	E
R	Y	N	B	D	R	S	B	U	T	T	E	R	F	L	I	E	S	R	T
H	R	I	T	E	D	K	S	V	L	G	E	K	T	V	K	S	G	C	J
D	G	P	M	T	A	N	W	D	N	A	S	I	Y	H	X	S	Z	O	P
D	M	M	K	Q	N	C	B	I	C	E	P	O	P	S	F	Y	J	J	S
W	U	A	S	E	W	N	H	Z	B	C	Y	Z	V	L	K	H	T	D	Y
S	Z	C	Z	T	G	T	Q	B	R	J	C	F	O	U	X	D	K	A	F
Y	P	T	D	N	A	J	J	P	A	G	P	W	P	H	K	E	N	H	R
M	D	O	B	B	O	P	O	O	V	L	E	B	A	N	T	D	X	R	S
L	V	J	N	F	D	I	J	Q	M	R	L	G	A	G	P	K	J	D	K
E	G	U	W	G	K	I	T	M	S	T	U	Y	H	S	N	Y	F	X	J
K	S	F	I	Z	K	Z	D	A	J	T	C	B	D	L	E	I	R	F	Z
W	O	L	I	D	K	G	I	Y	C	S	L	I	Z	M	S	B	K	T	C
R	O	O	I	R	S	A	B	X	K	A	B	M	B	J	N	W	A	I	Q
I	L	A	L	G	O	P	E	L	P	P	V	T	N	Y	R	P	E	L	H
X	U	P	K	H	R	A	X	X	I	F	N	T	K	R	U	N	T	R	L
S	S	X	V	M	D	D	T	P	R	K	I	U	G	L	I	B	R	N	L
A	J	N	G	E	R	I	X	R	T	J	K	V	U	H	T	O	L	J	Z
E	N	T	A	G	F	E	N	B	D	Z	J	K	S	H	M	Z	J	S	H
F	L	I	P	F	L	O	P	S	A	U	L	N	X	D	W	E	M	R	M
V	R	Y	T	O	P	M	G	R	O	Z	U	Y	E	L	M	C	R	I	H
N	N	Y	Q	F	G	I	W	Z	R	S	W	R	D	H	P	T	I	I	X
C	F	W	U	I	X	C	K	A	H	N	G	S	M	F	H	C	A	E	B
C	Y	B	A	O	C	T	V	C	G	I	P	O	A	P	B	U	O	L	Q

BASEBALL

BUMBLEBEES

FLIP FLOPS

HIKING

ROAD TRIP

SUNSHINE

BEACH

BUTTERFLIES

FLOWERS

ICE POPS

SUMMER

SWIM

BEACH BALL

CAMPING

FUN

POOL TOYS

SUNBATHING

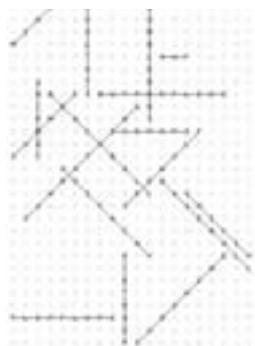
VACATION

SUMMER

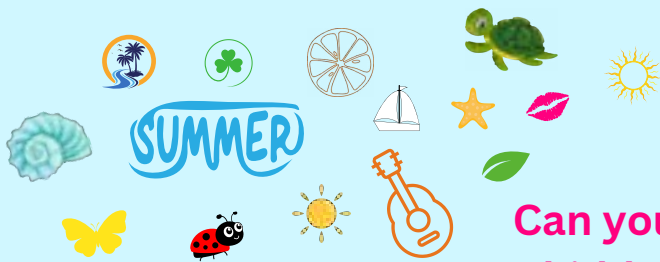
Summer



A
N
S
W
E
R



K
E
Y



SUMMER

Can you find the
15 hidden pictures?





MIDWEST
MEMBERS
Credit Union