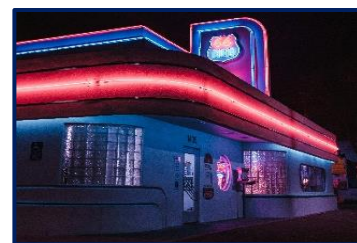




D.L. Evans | PREMIER CLUB



Premier Club

Route 66 Centennial Celebration

10 Days, 9 Nights

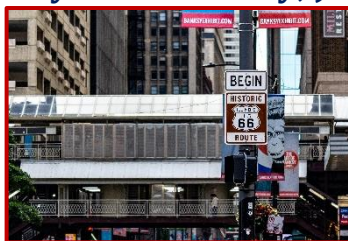
July 11 – 20, 2026

Day One: Saturday, July 11 – Welcome to Chicago, Illinois (D)

Arrive in Chicago, where the adventure begins in the heart of the Windy City. Upon arrival at the airport, meet your Tour Director before transferring to your accommodations. Enjoy some free time before gathering for a special welcome dinner at a local eatery, where you'll get a taste of classic Chicago flavors and an introduction to the exciting journey ahead.



Day Two: Sunday, July 12 – Exploring Chicago (B)



Spend the morning discovering the energy of Chicago on a guided sightseeing tour, which includes a stop at the official Route 66 "Begin" sign, marking the start of your historic road trip. See iconic landmarks such as the Willis Tower, Millennium Park, and Navy Pier before enjoying an afternoon at your leisure. Stroll along the Riverwalk, explore world-class museums, or indulge in a famous deep-dish pizza before resting up for the days ahead.

Day Three: Monday, July 13 – Chicago to Springfield (B)

Leaving Chicago, we travel south to Pontiac, Illinois, home of the Route 66 Hall of Fame & Museum. Housed in a historic fire station, this museum is filled with nostalgic memorabilia, vintage photos, and maps outlining the journey ahead. Continue to Springfield, Illinois, the state's capital and the former home of Abraham Lincoln. Here, we visit the Abraham Lincoln Presidential Museum, an immersive experience that brings the 16th president's story to life. The evening is yours to explore Springfield's historic streets and charming eateries.



Day Four: Tuesday, July 14 – Springfield to St. Louis, Missouri (B, L, D)



Crossing the mighty Mississippi River, we arrive in St. Louis, Missouri, known as the "Gateway to the West." Take in the city's highlights on an orientation tour before stopping for lunch at a local restaurant. No trip to St. Louis is complete without a visit to Ted Drewes Frozen Custard, a Route 66 tradition since 1929. Afterward, we take a self-guided tour of the National Museum of Transportation, where you can explore an incredible collection of historic vehicles. The evening wraps up with dinner at a popular local restaurant, offering a taste of Midwestern hospitality.

Day Five: Wednesday, July 15 – St. Louis to Joplin (B, D)

Today, we continue west along Route 66, stopping first in Waynesville to visit the Old Stagecoach Stop, where each of its ten rooms reflects a different time period between the 1850s and 1960s. If time allows, we'll visit Buc-ee's, the world's largest convenience store, for a fun and unique roadside stop. Next, we explore the Route 66 Car Museum in Springfield, Missouri, where classic automobiles tell the story of America's love affair with the open road. Lunch is on your own at Red's Giant Hamburg, home to the first drive-thru



restaurant in America. After a photo stop at Gary's Gay Parita, a beautifully restored 1930s Sinclair gas station, we continue to Joplin, where we enjoy dinner and a relaxing evening at our hotel.

Day Six: Thursday, July 16 – Exploring Joplin & Beyond (B, D)

A local guide leads us through the region's hidden gems, starting with historic Carthage Square and the artistic ghost town of Red Oak II. We visit the infamous Bonnie and Clyde Hideout before stopping at Grand Falls, Missouri's largest continuously flowing waterfall. A unique moment on our journey awaits at the Tri-State Marker, where Missouri, Kansas, and Oklahoma converge. Before returning to Joplin, we explore the quirky Gearhead Curios in Galena, Kansas, a must-see stop for Route 66 enthusiasts. Dinner is at a charming local restaurant, where you can unwind and reflect on the day's adventures.



Day Seven: Friday, July 17 – Joplin to Oklahoma City, Oklahoma (B)

Crossing briefly through Kansas, we enter Oklahoma, home to the Cherokee Nation. Our first stop is in Tulsa, where we admire the "East Meets West" sculpture, a tribute to Cyrus Avery, the "Father of Route 66." Later, we arrive in Oklahoma City, a vibrant city where Western heritage meets modern culture.



Day Eight: Saturday, July 18 – Oklahoma City to Amarillo, Texas (B, D)



Begin the day with a sightseeing tour of Oklahoma City before heading to Elk City, where the National Route 66 Museum brings the entire stretch of the highway to life through exhibits representing each of the eight states it crosses. From here, we journey into the Texas Panhandle, arriving in Amarillo, the "Yellow Rose of Texas." Tonight, enjoy a Texas-sized dinner at a local restaurant.

Day Nine: Sunday, July 19 – Amarillo to Albuquerque, New Mexico (B, D)

Leaving Amarillo, we make a stop at the famous Cadillac Ranch, an eccentric roadside attraction featuring ten colorful, graffiti-covered Cadillacs buried nose-first in the desert. We then continue to Adrian, Texas, the official halfway point of Route 66. Crossing into New Mexico, we visit Russell's Car Museum, a hidden gem featuring classic cars and vintage memorabilia. In Tucumcari, we explore the nostalgic charm of Route 66 with stops at Teepee Curios and the historic Blue Swallow Motel, one of the most photographed spots along the highway. Arriving in Albuquerque, we take a drive down Central Avenue, where many original Route 66 buildings and neon signs still stand. Our journey concludes with a special farewell dinner, where we reminisce about the unforgettable adventure we've just experienced.



Day Ten: Monday, July 20 – Depart Albuquerque (B)



After breakfast at the hotel, we transfer as a group to Albuquerque Airport, where we say our final goodbyes. As we part ways, we take with us cherished memories of the places we've explored, the stories we've heard, and the friendships we've made along Route 66.

TOUR INCLUDES

- Round trip airfare from Boise
- Private coach service
- Nine nights lodging
- Baggage handling of one bag
- 10 days professional tour guide
- All attraction admissions and fees as outlined in the itinerary
- Applicable lodging and meal taxes and gratuities
- 16 Meals: 9 Breakfasts, 6 Dinners, 1 Lunch
- Entertainment per itinerary
- All taxes and Gratuities for the Professional Guide & motor coach driver
- DVD of the tour
- Services of a Premier Club Director

NOT INCLUDED

- Articles of a personal nature
- Baggage fees imposed by the airlines
- Meals other than those specified in the itinerary
- Alcoholic beverages

TOUR COST PER PERSON

Single: \$6,336 Double: \$5,175 per person

**Deposit of \$550.00 per person to hold your reservation.
\$399 Travel Insurance available. Due upon reservation.**

Final payment due no later than June 2, 2025

Tour pricing is based on a **minimum of 25 travelers** and may change due to final group size or fuel surcharges. Airfare is estimated and subject to change until final payment.

Please Note: Seat upgrades/seat selections on flights cannot be guaranteed

FOR MORE INFORMATION/RESERVATIONS, CONTACT

Amy Evans	Treasure Valley	208-327-5400
Brecka Byers	Treasure Valley	208-327-7850
Bonnie Zollinger	Mini-Cassia	208-677-5215
Raegan Moser	Eastern Idaho	208-785-7565

COMPLETE AND RETURN WITH DEPOSIT

General Information: A deposit is required upon reservation for any D.L. Evans Bank Premier **Club** trip to secure your place. By registering for this trip, you authorize D.L. Evans Bank personnel to share your personal information with those companies necessary to make all travel arrangements for the tour. D.L. Evans Bank enjoys sharing the excitement and adventures that you experience on the Premier Club trips by taking photos of **Premier Club** travelers and on occasion, publishing those photos in our newsletter, trip video for travelers, and a secure Facebook page. You authorize D.L. Evans Bank to use your photo and likeness in our newsletter, marketing materials and social media pages unless you specifically opt-out.

Please **sign** here if you **DO NOT** authorize the use of your photo for these purposes.

Opt-Out of Photos: Signature: _____ Date: _____

Cancellation Policy: Should it be necessary to cancel your trip, we request as much notice as possible. **A refund of your deposit less your insurance premium (\$399) will be made if you cancel before March 13, 2026, and you purchased the insurance through Globus. If you cancel between March 13 and April 10, 2026, your deposit is non-refundable. Your insurance premium is always non-refundable.** If you cancel after the refund date (April 10, 2026) or while you are on tour, your claim will be processed with the insurance company, **and if your request satisfies the insurance claim requirements, a refund less the cost of the insurance premium will be sent to you by the insurance company.** D.L. Evans Bank has the right to withdraw the tour due to insufficient participation or for any reason whatsoever; also, to decline to accept or to retain any person as members of the tour. If we should cancel a trip due to insufficient reservations all money will be refunded. **Travel insurance is required for this tour.** It is your responsibility to follow all insurance company requirements for claims. **D.L. Evans Bank is not liable and will not provide a refund if the insurance claim is denied.**

Baggage Disclaimer: Although every effort is made to handle passengers' luggage as carefully as possible, D.L. Evans Bank is not responsible for and does not assume liability or accept claims for loss of or damage to luggage due to breakage, theft or wear and tear through hotel and group carrier handling. The trip interruption and cancellation insurance provided on all extended tours allows some coverage for these occurrences.

General Disclaimer: In all matters relating to the making of arrangements for hotel and/or motel accommodations, sight-seeing tours, and services provided incidental thereto, entertainment, and transportation by air, railroad, motor bus, automobile, steamship, or boat, D.L. Evans Bank acts only in the capacity of trip coordinators for the agents of the airlines, hotels/motels, and other suppliers stated in the literature describing the services purchased. Because of its status as trip coordinator, and because it maintains no control over the personnel, equipment, or operations of these travel service suppliers. D.L. Evans Bank and its employees assume no responsibility for and cannot be held liable for any personal injury, property damage, or other loss, accident, delay, inconvenience, or irregularity which may be occasioned either by reason of (1) any wrongful, negligent, or unauthorized acts or omissions on the part of any of the suppliers, (2) any wrongful, negligent, or unauthorized acts or omissions on the part of any employee of these suppliers, (3) any defect in or failure of any vehicle, equipment, or instrument owned, operated, or otherwise used by any of these suppliers, or (4) any wrongful or negligent acts or omissions on the part of any party not under the supervision and control, direct or otherwise, of D.L. Evans Bank.

Health/Travel Fitness Policy: On **Premier Club** trips, it is required that persons needing assistance be **accompanied by a companion** who is totally responsible for providing that personal assistance. We would like everyone to have the opportunity to travel with the **Premier Club** and we will make a reasonable effort to accommodate the needs of all our tour participants. You must notify a **Premier Club** representative at the time your reservation is made of any disability or impairment requiring special attention or if the disability/impairment has given you issues in the past. We will make reasonable efforts to accommodate the special needs of our travelers. If a traveler requires assistance, we require that he/she be accompanied by a

companion who is capable and totally responsible for aiding them. Neither D.L. Evans Bank's employees, agents, nor its suppliers, may lift or physically assist travelers. If a traveler thinks he/she might need assistance during a trip, he/she should call Premier Club representative to determine what assistance might be reasonably provided. Premier Club personnel cannot provide special individual assistance to travelers with special needs for walking or other routine activities. D.L. Evans Bank cannot provide special assistance to Premier Club members. D.L. Evans Bank strongly urges you to consider whether you should attend trips that go beyond your physical exertion level, as it takes away from the trip experience for yourself and the other attendees.

Premier Club tours are assigned activity ratings from level 1 to level 5. Please consider the following statements and at what level you are comfortable traveling when booking your tour:

LEVEL 1:

I like to keep walking to a minimum and avoiding stairs when I can. I can walk up to a mile per day over primarily level ground with short periods of standing.

LEVEL 2:

I'm comfortable walking one to two miles throughout the day. I expect to get on and off a motor coach, and I'm ready to stroll through cities and walk over uneven pavement. I can stand for up to 30 minutes and climb one to two flights of stairs.

LEVEL 3:

I like to spend much of the day exploring and be out and about on a coach with my days full. I can walk two to three miles per day and stand for long periods of time with no difficulty. Stairs don't bother me, and I love to keep up with the group.

LEVEL 4:

I am a fit traveler and am capable of easily walking three miles or more during the day. I would like my days to be filled with active pursuits for one to three hours at a time. I can walk on uneven and rocky terrain, including small hills.

LEVEL 5:

Walking is the best way to get to know a new place. I'm energetic and enjoy a challenge. I'm always ready to spend the day on the move. I am fine with uneven surfaces, inclines, stair climbing, windy or wet conditions at sites, and long periods of standing. I expect some of the experiences to occur in the evening with very long days.

Route 66 Centennial Celebration has an activity **LEVEL of 3.**

I acknowledge that I have read and understand the above disclaimers/policies:

PLEASE NOTE: A deposit of \$550/person is required to hold your reservation plus \$399/person insurance premium. If you choose to not purchase the Globus insurance, you are required to provide proof of alternate travel insurance and may not receive any refund if you cancel.

Signed: _____ Date: _____
Club Member(s)

Signed: _____ Date: _____
Premier Club Director

Single: \$6,336 each

Double: \$5,175 each

