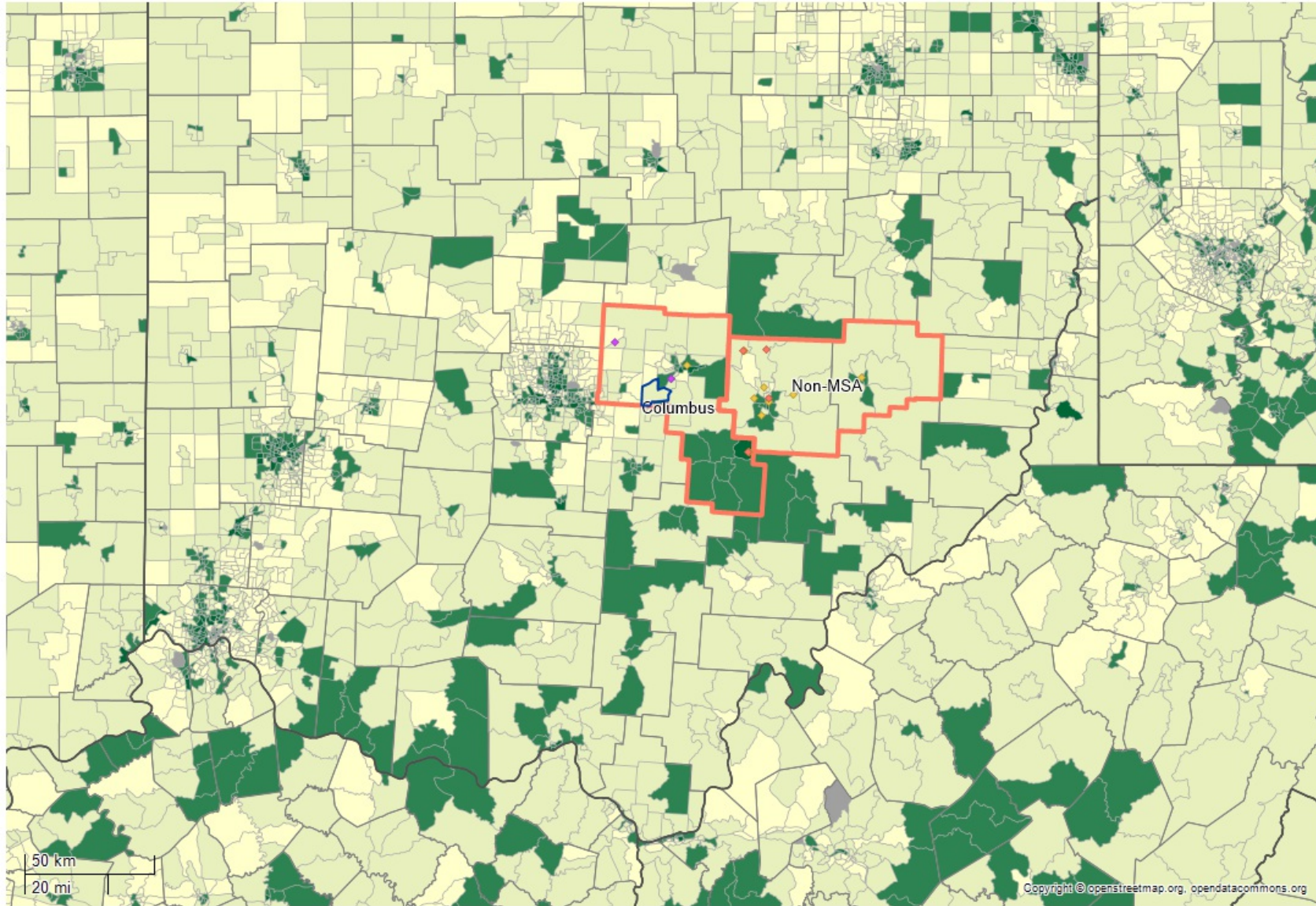


Ncommunity

Presented to: **The Community Bank**
February 27, 2024

Presented by: **Ncontracts**

Loans: CRA data as of Dec-2023
CRA Benchmark Data: 2022 Public CRA Data as of Dec 20, 2023
HMDA Benchmark Data: 2022 Public HMDA Data as of June 29, 2023
Census Data: 2023 Census Data released September 28, 2023



- State
- County
- Census Tract
- Zip Code
- Assessment Area
- ◆ Branch
- ◆ Limited Service Branch
- ◆ Main Office
- ◆ Cash Dispenser
- ◆ Deposit ATM or ITM
- ◆ Other
- Income Level**
- Low
- Moderate
- Middle
- Upper
- N/A

Applied Filters

- Facility Status: (Open)
- CRA Loans: Loan File
- Real Estate Loans Action Taken Date: (1/3/2022 - 12/29/2023) and empty values
- Real Estate Loans: Loan File
- You are included in the HMDA benchmark.